

MCU update

Attention

1. The DC voltage should be kept at 12-14V.
2. Unstable voltage would lead to the failure of updating.
3. In order to access into the windows CE interface, the file needed in the SD/USB device.
4. Please make sure do not cut off the power. If power supply is disconnected during the updating, that will damage the unit and it will not reboot again.

What you should know before the actions.

1. The MCUUpdate.exe update tool is available for all the device.
2. The files you need before the updating.



Update.exe
A2265_Tools WCE ...
Roadrvoer



MCUUpdate.exe
MCU Update



I6241_EN_7_M_6_5...
HEX 文件
363 KB

Update steps

1. Power on the unit.



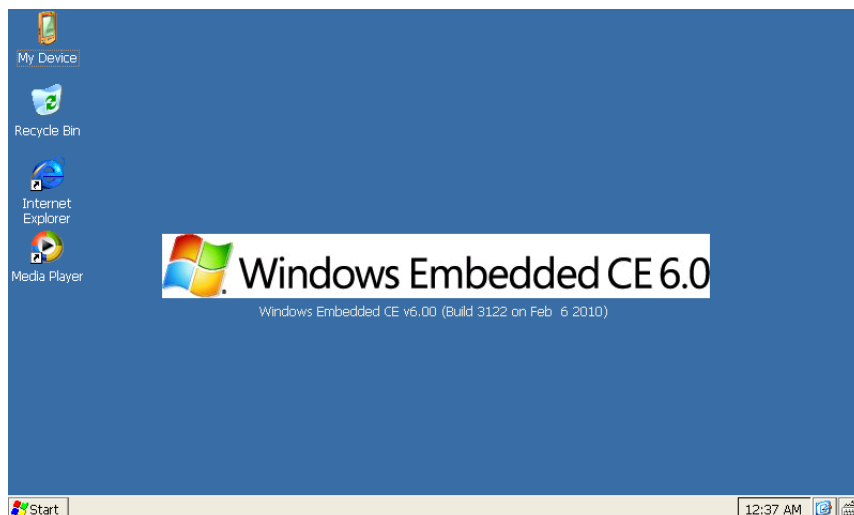
2. Click menu icon to enter into the menu interface.



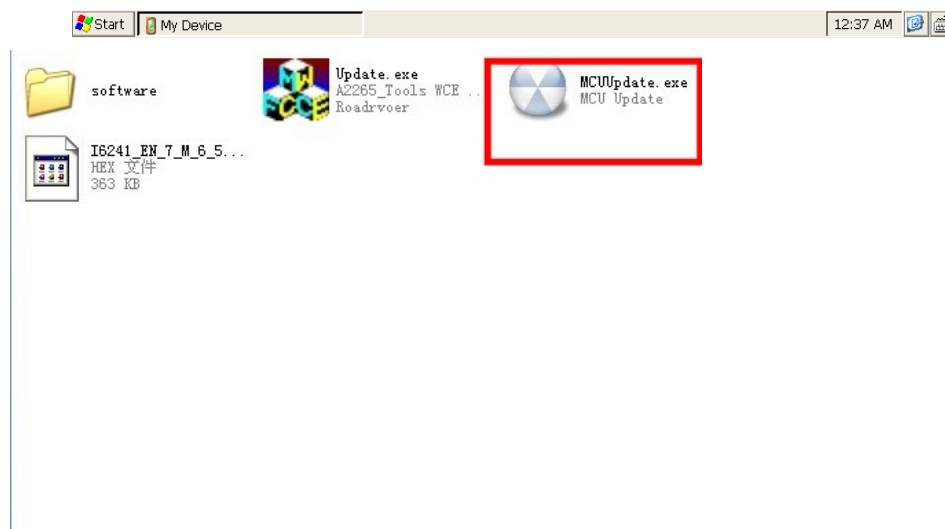
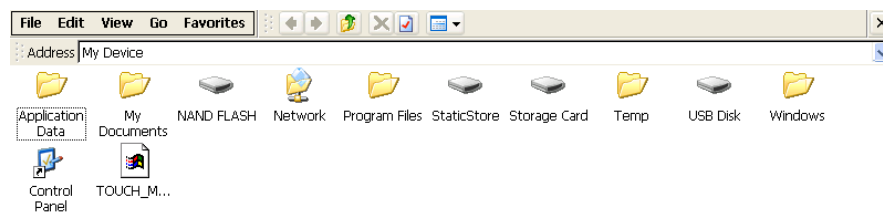
3. Click options icon, then click system, you can see the update icon.



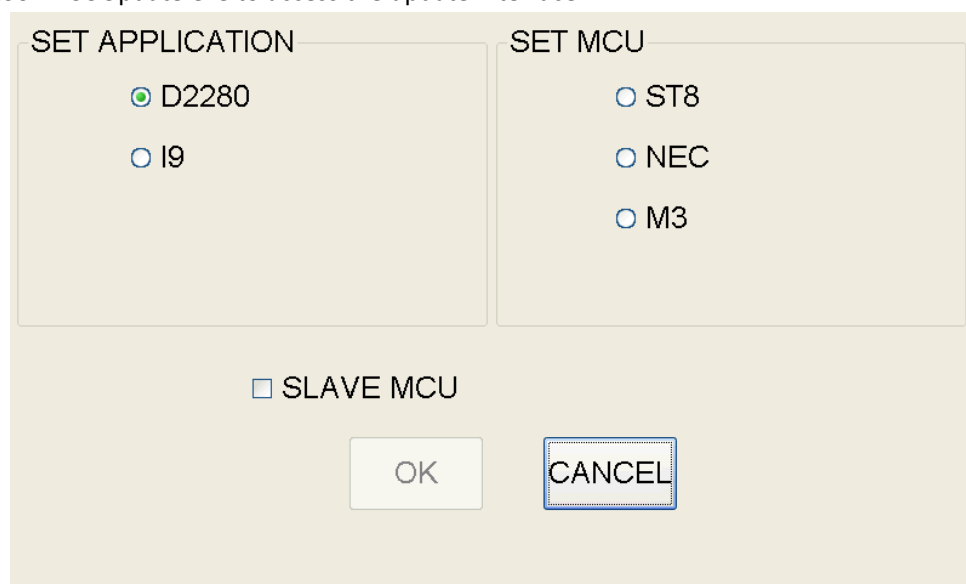
4. Click update icon and you can enter into the windows CE interface.



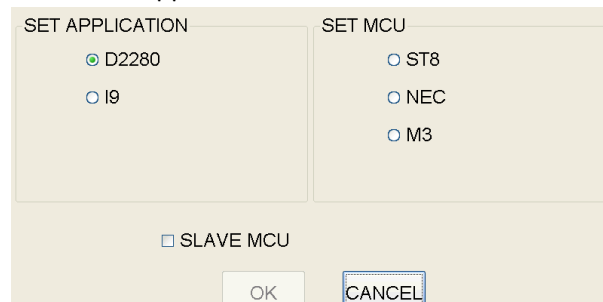
5. Double-click my device then open SD/USB device.



6. You can see the update tools and the software in the SD/USB device. Double-click update tool MCUUpdate.exe to access the update interface.



7. Then you must set the Application and MCU ,then click ok icon, like the following picture,



Application select:

If the application is D2280, then select the D2280

If the application is I9, then select the I9.

MCU select:

If the unit is STM8 platform, then select STM8

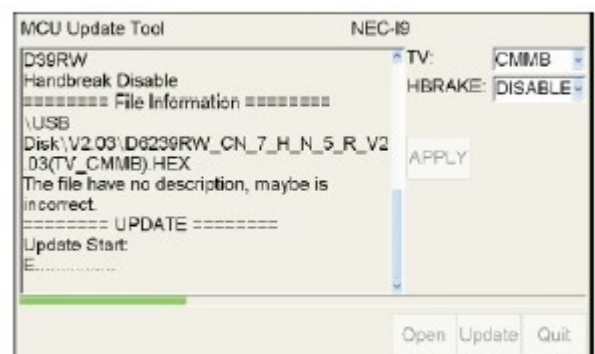
If the unit is NEC platform, then select NEC

If the unit is I10, then select M3

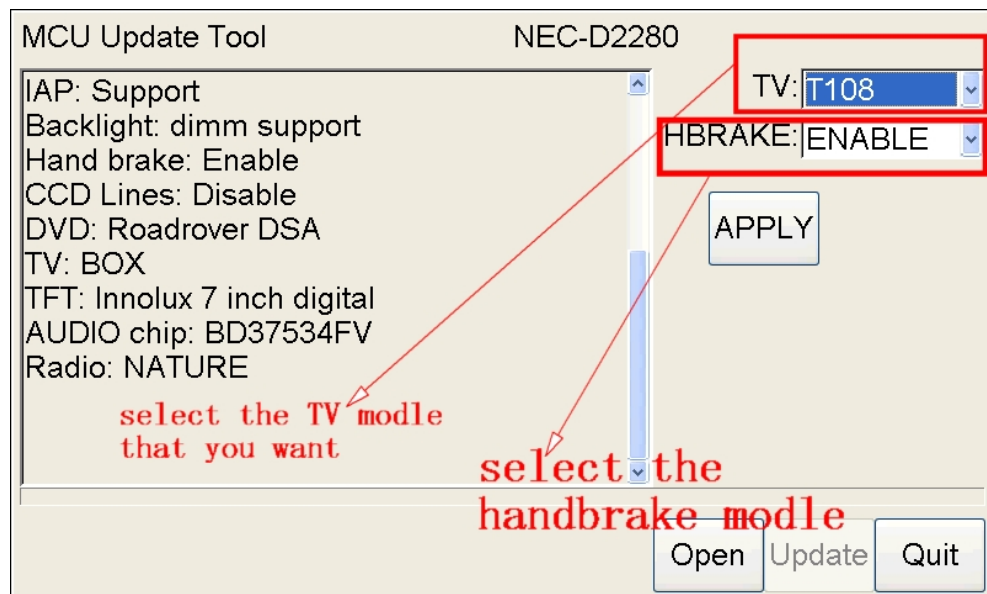
8. Click open to select the MCU file
then update.



for the device and click OK,



9. It will update automatically and goes back to the homeinterface after the updating. Then go to update interface again to set the TV and Handbrake. You can config the mode like the following picture:



10. Then click the APPLY, the device will restart .